

# ENGINEERING EXCELLENCE

AT IOWA STATE UNIVERSITY



Artist rendering,  
not for construction

IOWA STATE UNIVERSITY

Department of Civil, Construction and Environmental Engineering



## Engineering Excellence at Iowa State University

Resilient buildings and bridges. Safer roads. Sustainable materials. Innovative construction. Clean drinking water. Intelligent Infrastructure. Every aspect of the Iowa State University Department of Civil, Construction and Environmental Engineering is focused on a better quality of life for Iowa, our nation and our world.

Iowa State is renowned for excellence in engineering, with the College of Engineering consistently ranked among the top programs at public universities; within the college, the Department of Civil, Construction and Environmental Engineering has long contributed to this high standing. The department takes pride in providing a student-centered, real-world undergraduate and graduate education that prepares students to contribute, compete and lead when they enter the workforce. Research with which our students participate meets the challenges of today and impacts our lives today and tomorrow.

Offering undergraduate majors in three areas – civil, construction and environmental engineering – the department promotes an

experiential, collaborative approach to learning. From first-year Learning Communities through the integrated senior capstone course, the curriculum is structured around a team-based educational model that includes practical application along with theory.

The department offers this high-quality education – and continues to garner high rankings – with limited facilities. The Town Engineering Building, located on the northwest corner of campus, has remained nearly unchanged for over 50 years since it was constructed in 1971, a time when classes were mainly presented in lecture format. The building lacks community gathering and collaboration space, and a prominent departmental presence and identity.

As educational models have evolved and other facility requirements have shifted over time, the need to expand and revitalize this building has become critical. A plan is underway that will help ensure an Iowa State civil, construction and environmental engineering education remains innovative and competitive for years to come.

### POINTS OF PRIDE

**100%**  
placement rate for construction engineers within six months of graduation

**96%**  
placement rate for civil engineers within six months of graduation



### ISU CIVIL ENGINEERING

graduate program

▼  
tied for  
**27th overall**  
in U.S. News and World Report rankings

▼  
and tied for  
**18th**  
among public institutions

undergraduate program

▼  
tied for  
**34th overall**  
in U.S. News and World Report rankings

In Fall 2022, the program had:

> **549**

**undergraduate civil engineering students**, making it the **4th largest program in the U.S.**  
(American Society for Engineering Education, 2020)

**249**

**undergraduate construction engineering students**, making it the **largest program in the U.S.**

**85**

**undergraduate environmental engineering students**, only **two years** after the program started in 2020



## Town Engineering: *Building for the Future*

The ideal facility for the Department of Civil, Construction and Environmental Engineering must reflect its collaborative, student-centered nature and meet the needs of today's and tomorrow's learning environment.

The Town Engineering Building project will expand the department's footprint from approximately 60,000 to 80,000 net square feet – combining the construction of a two-story

addition on the south side of the building with the renovation of existing areas. The plan features open, flexible instructional spaces and large collaboration areas that will allow students and faculty to engage in active learning and discussion. The overall design is meant to be inviting and inclusive, and will surround students in a dynamic living-learning environment and community.



### State-of-the-Art Collaboration and Instructional Spaces

The project will create a variety of bigger, brighter, student-centered spaces that will facilitate collaboration both within and beyond the classroom.

#### These new spaces will include:

- Large team-based instructional classroom
- Geodetics/surveying instructional lab for first-year engineering classes
- Environmental wet instructional laboratory
- Team-based instructional classroom emphasizing electrical and mechanical systems
- Right-sized computer instructional room with open computing
- Student Advising Center



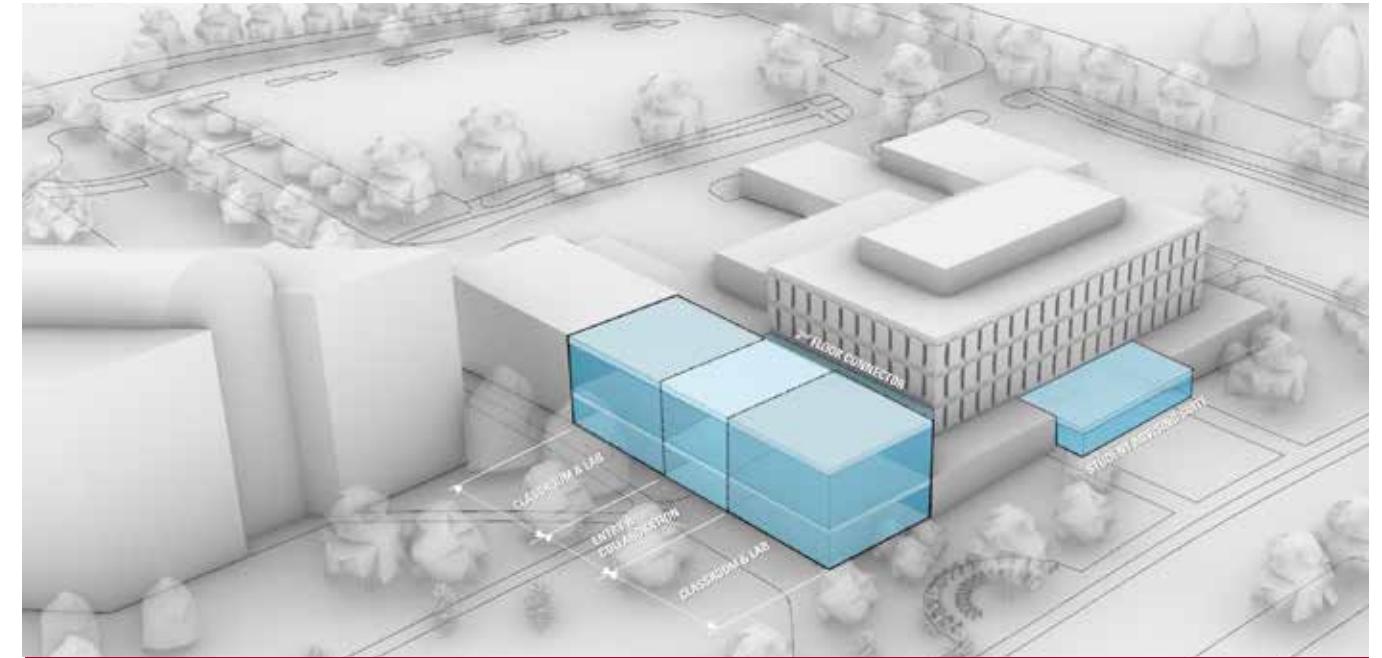


### **New Entrance and Student-Centric Environment**

A distinctive entryway – featuring open space and natural light – will establish a sense of identity that reflects the excellence of the department, inspiring pride in current students and greater appeal for prospective students. The student advising center will relocate to the first floor, allowing better access for students and establishing a more prominent, welcoming and dynamic departmental presence in the building.

### **Living-Learning Laboratory**

Throughout the new spaces, visible mechanical and structural components will create a living-learning environment where students can observe construction practices, study energy consumption by gathering building data from heating and cooling systems, and experience other hands-on learning.



## **The Time is Now**

The time is right to embark on a vibrant vision for Town Engineering to ensure the future quality of a department that has long been a source of pride for its graduates. Pursuing this project today is vital to attracting quality students and preparing them to become the industry leaders for tomorrow. We look forward to working with alumni, friends and corporate partners on a project that promises to improve every aspect of Iowa State’s civil, construction and environmental engineering education for generations to come.

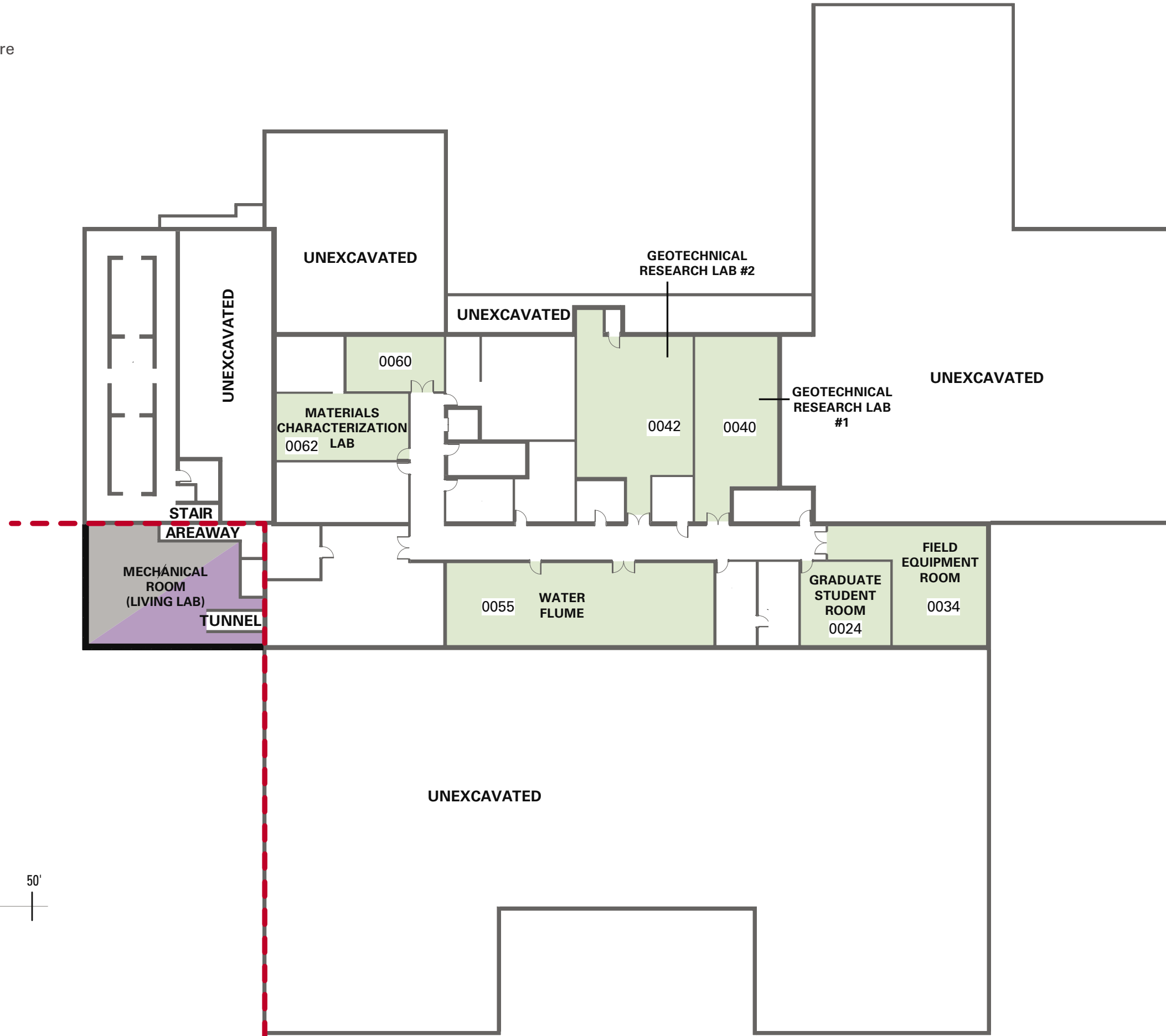
To make this project a success, the department seeks \$25 million in private support from alumni, friends, corporations and other partners. The project will offer prominent naming opportunities for those who wish to have their names associated with the excellence of the department.

To learn more about how you can support the Town Engineering project, please contact:

**John Aronowitz,**  
*Executive Director of Development*  
 515-294-4489  
[johnaron@foundation.iastate.edu](mailto:johnaron@foundation.iastate.edu)  
[www.ccee.iastate.edu/building-for-the-future-town-engineering-renovations](http://www.ccee.iastate.edu/building-for-the-future-town-engineering-renovations)

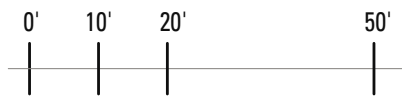
These images and plans are representational only and subject to change

**BASEMENT LEVEL**



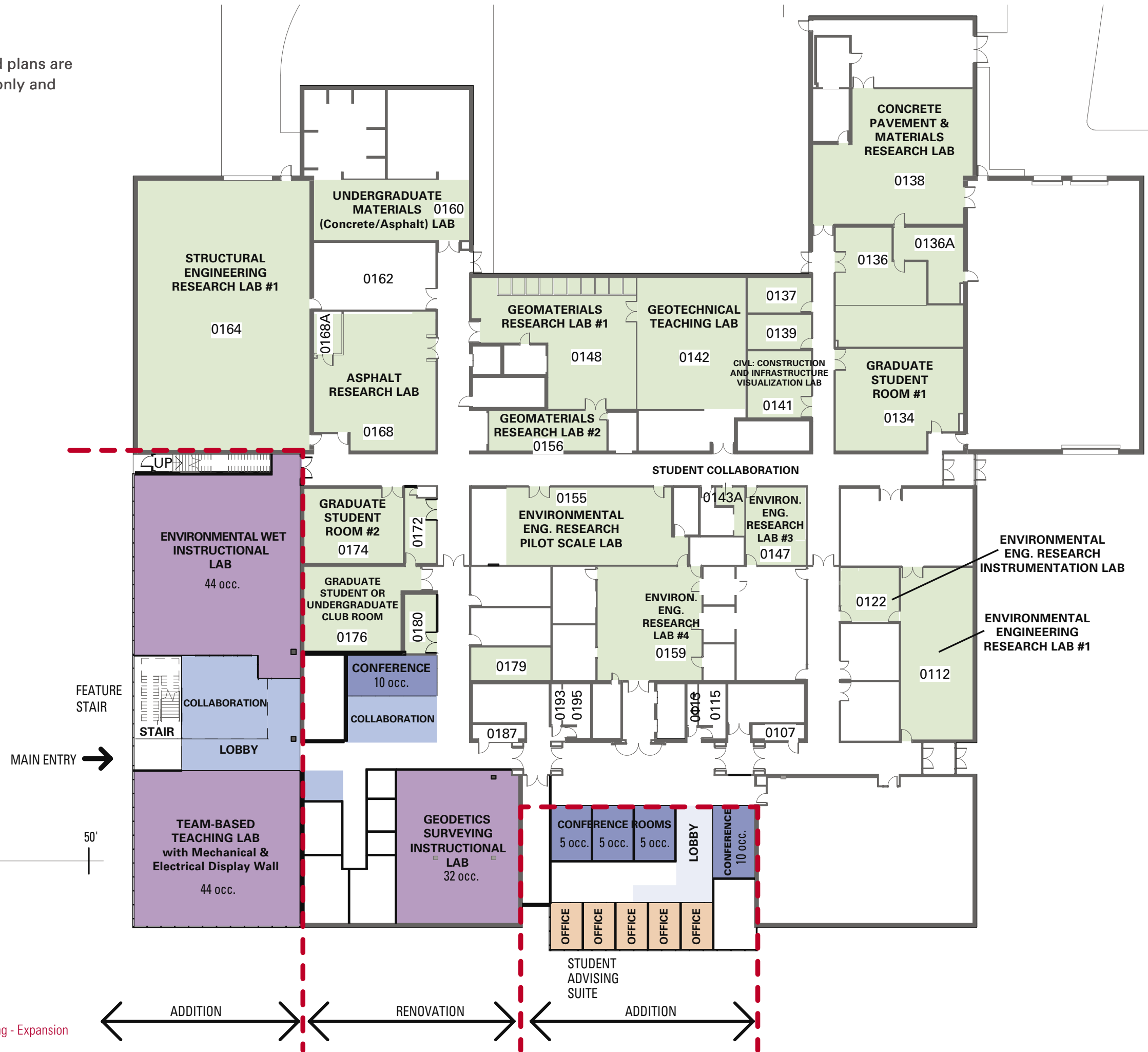
**COLOR LEGEND**

- Future CCEE Projects or Naming Opportunities
- Instructional Lab



These images and plans are representational only and subject to change

**FIRST LEVEL**

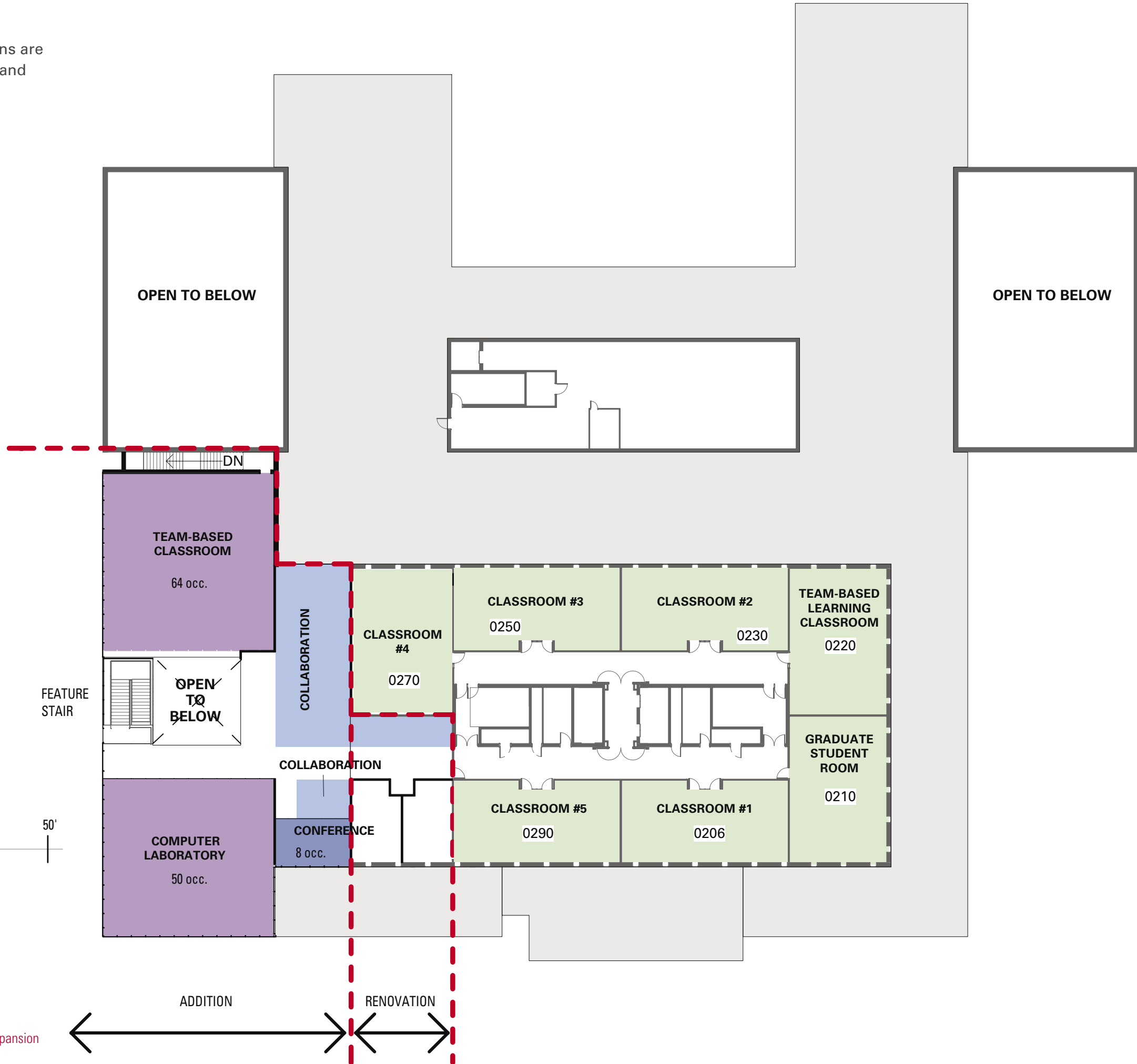


**COLOR LEGEND**

- Lobby/Collaboration
- Conference
- Future CCEE Projects or Naming Opportunities
- Instructional Lab
- Office

These images and plans are representational only and subject to change

**SECOND LEVEL**



**COLOR LEGEND**

- Lobby/Collaboration
- Conference
- Future CCEE Projects or Naming Opportunities
- Instructional Lab

These images and plans are representational only and subject to change

**THIRD LEVEL**



**COLOR LEGEND**

- Future CCEE Projects or Naming Opportunities



IOWA STATE  
UNIVERSITY  
FOUNDATION

---

2505 University Boulevard

P.O. Box 2230

Ames, Iowa 50010-2230

515.294.4607

[www.foundation.iastate.edu](http://www.foundation.iastate.edu)