

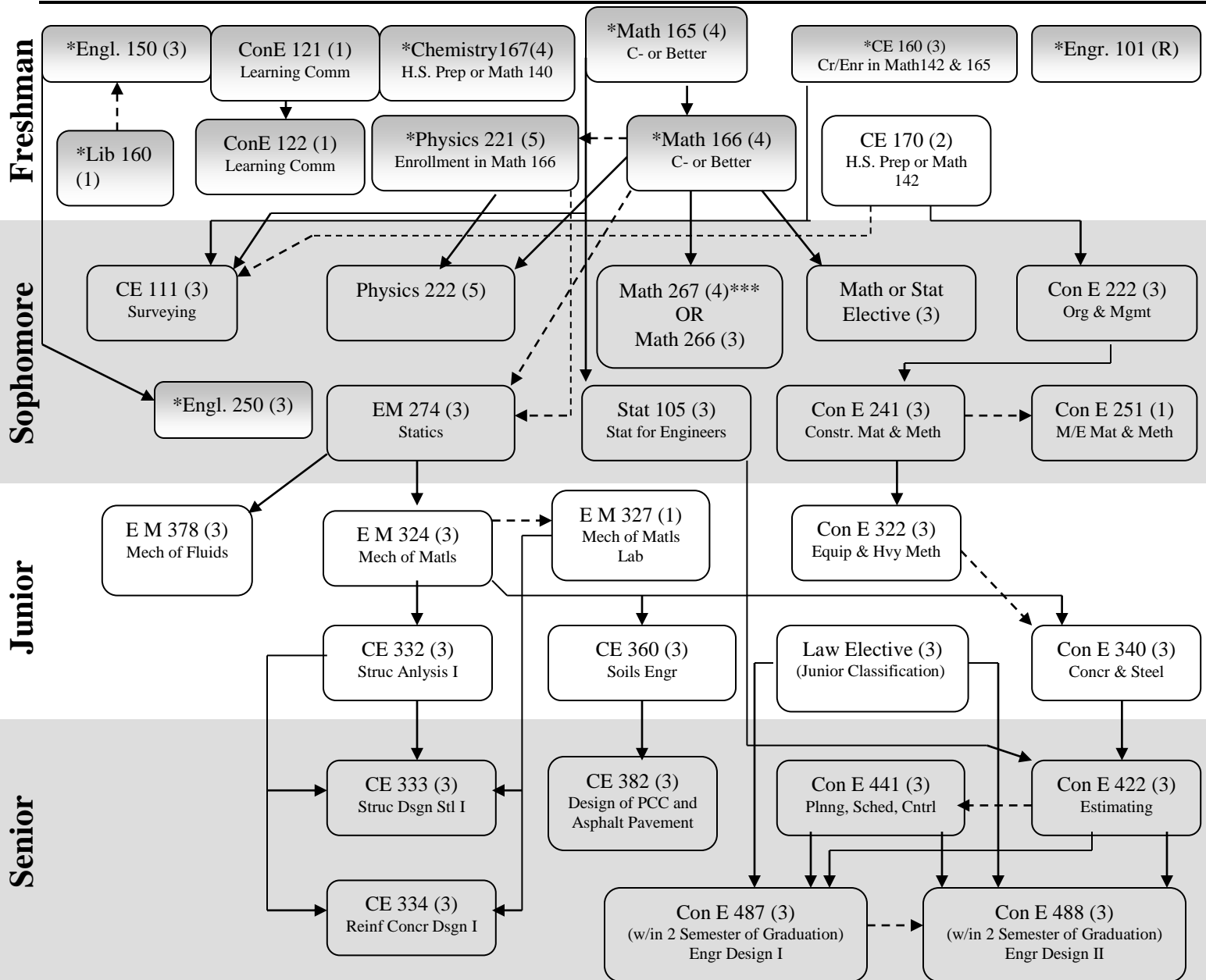
Construction Engineering PREREQUISITE CHART

Heavy/Highway Emphasis = 124 Credits

Catalog 2012-2013

Pre-Requisite

 Co-Requisite



Social Science and Humanities (12 Cr.)

- ___ Psych 101, 230, 250 or 280 or Soc 134 (3 cr)
- ___ Econ 101 or 102 (3 cr)
- ___ US Diversity** (3 cr)
- ___ International Perspective** (3 cr)

*Denotes Basic Program course
 **See catalog or matrix for approved courses
 ***To allow greater flexibility in changing between Emphases and to meet ABET requirements, students are encouraged to take Math 267.

Other Electives (17 Cr.)

- ___ Math or Stat Elective** (3 cr)
- ___ Business Communication (3 cr)
 Engr 302, 309 or 314
- ___ Business Elective:
 IE 305 Engineering Economic Analysis (3 cr)
- ___ Engineering Topics Elective** (5 cr)
- ___ Law Elective (3 cr)
 ConE 380 or Accounting 215

Electives